

Drug Education and Managing Drug Related Incidents Policy

English Martyrs' Catholic Primary School



This policy was written in May 2017 and consultation was carried out with staff, pupils, parents and governors. It will be reviewed in June 2018.

1. School Statement

English Martyrs', recognises the harm that all drugs can have, be they illegal (cocaine, cannabis, heroin etc) legal (alcohol, cigarettes and solvents) or medicines. We aim, through this policy, and it's guidelines to provide clear and consistent procedures, which promote safety and good management.

2. Aims

- 2.1 To help young people resist drug misuse in order to achieve their full potential in society
- 2.2 To promote and safeguard health and safety of pupils and staff within the school
- 2.3 To provide a hierarchy of sanctions, for different levels of severity for different drug related incidents
- 2.4 To endorse a range of learning and supportive responses for those involved in an incident
- 2.5 To encourage an environment where a supportive response to incidents is not undermined by an unduly punitive response
- 2.6 To ensure this policy is fully implemented and disseminated to ensure understanding and adopting for all of those connected with the school; pupils, parents, teachers, governors and auxiliary staff.

3. Contents & Organisation of Drug Education

- 3.1 The school aims to provide a programme of drug education in line with the Science Curriculum and PSHE education scheme of work.

Science Curriculum Links

Year 2 pupils should be taught to:

- describe the importance for humans of exercise, eating the right amounts of different types of food, and hygiene

Year 3 pupils should be taught to:

- identify that animals, including humans, need the right types and amount of nutrition, and that they cannot make their own food; they get nutrition from what they eat

Year 6 pupils should be taught to:

- recognise the impact of diet, exercise, drugs and lifestyle on the way their bodies function

PSHE Curriculum Links - Core Theme 1: Health and Wellbeing

Year 1

- What is meant by a healthy lifestyle
- To identify different influences on health and wellbeing
 - What constitutes a healthy lifestyle including the benefits of physical activity, rest, healthy eating and dental health
 - That household products, including medicines, can be harmful if not used properly
 - About people who look after them, their family networks, who to go to if they are worried and how to attract their attention, ways that pupils can help these people to look after them

Year 2

- How to manage risks to physical and emotional health and wellbeing
- Ways of keeping physically and emotionally safe
 - That household products, including medicines, can be harmful if not used properly
 - Rules for and ways of keeping physically and emotionally safe (including safety in the environment)

Year 3 and 4

- What is meant by a healthy lifestyle
- How to maintain physical, mental and emotional health and wellbeing
- How to make informed choices about health and wellbeing and to recognise sources of help with this
- To identify different influences on health and wellbeing
 - Which, why and how, commonly available substances and drugs (including alcohol and tobacco) could damage their immediate and future health and safety
 - How to make informed choices
 - What positively and negatively affects their physical, mental and emotional health

Year 5

- How to maintain physical, mental and emotional health and wellbeing
- How to make informed choices about health and wellbeing and to recognise sources of help with this
- To identify different influences on health and wellbeing
 - Which, why and how, commonly available substances and drugs (including alcohol and tobacco) could damage their immediate and future health and safety
 - To differentiate between the terms 'risk', 'danger' and 'hazard'
 - That pressure to behave in an unacceptable, unhealthy or risky way can come from a variety of sources, including people they know and the media

Year 6

- See Year 5 content plus
- How to respond in an emergency

3.2 The school will provide monitoring data to the Local Authority, on content and effectiveness of Drug education in line with the National Drug Strategy reporting process.

The DATe Lead will be responsible for:

- Ensuring the policy and programmes are implemented as agreed
- Supporting staff to assess pupils progress
- Recommending targets for whole school development
- Evaluation of the programme will be made by assessing, the attitudes of the pupils, the development of their personal skills and the knowledge and understanding they have gained. Review forms part of the content and is an ongoing process. The views of pupils, staff and parents will be sought and taken into account as the programme develops and changes.

4. Managing Drug Related Incidents Procedure

Our definition of drug includes medicines, alcohol and tobacco it is therefore important that all aspects of an incident are considered. The needs and circumstances of the pupils are paramount.

We will consider each situation individually and recognise that a variety of actions in response may be necessary to drug related incidents as recommended by: DfE and ACPO drug advice for schools:

<https://www.gov.uk/government/publications/drugs-advice-for-schools>

If the situation leads to a medical emergency the school emergency aid procedures will be followed immediately.

In the absence of a medical emergency the drug co-ordinator will be informed and an appropriate response considered. We will refer to the *DfE and ACPO drug advice for schools* on responding to drug related incidents and in determining the response the implications of any action we take will be carefully considered. The focus of any response will be the student not the substance and we will seek to balance the interests of the individual, other members of the school community and the wider community.

Responses will be cross-referenced with related school policies such as:

- Behaviour
- Health and Safety
- Child Protection
- School Visits

Unless there are exceptional circumstances we will inform parents /carers at the earliest opportunity so that we can work together to support the pupil and to resolve difficulties.

We have a range of professional colleagues who can give or obtain advice and support in drug or alcohol related situations. These include the school's Education Welfare Officer, the local Police Liaison Officer, counselling services from Early Help. These colleagues can help with a needs assessment and support us in developing an appropriate response. The pupil/s will always be told when information is being passed on, in accordance with the school's policy on confidentiality.

Our aim is to enable all pupils to fulfil their potential. We will work with the pupil, their parents or carers and colleagues from other agencies to remove barriers to achievement and resolve any difficulties that exist. Drug

related situations will be considered alongside other circumstances in the young person's life and not in isolation. We accept that it is never appropriate to respond in a way that is more punitive than that which might be considered by the police so that exclusion, whilst it remains and option will be used as the very last resort.

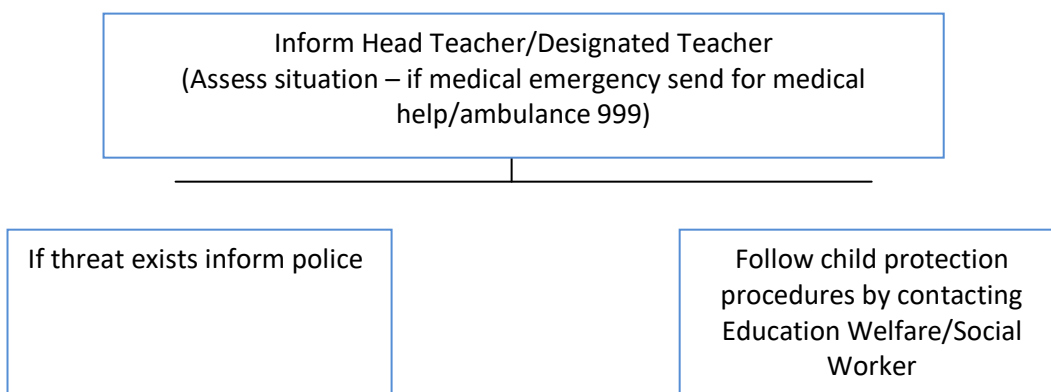
Should a substance suspected of being illicit be found on the school premises it will be handed to the headteacher and, in the presence of another member of staff placed in a sealed container in the school safe until it can be delivered to or collected by a police officer. S/he will also be involved in advising the school on the most appropriate response to the situation. The Local Authority School Drug Adviser and Drug & Alcohol Action Team are also able to provide guidance and advice.

All staff will be made aware of the legal constraints on gathering evidence and questioning those involved. They will not take action without involving the co-ordinator.

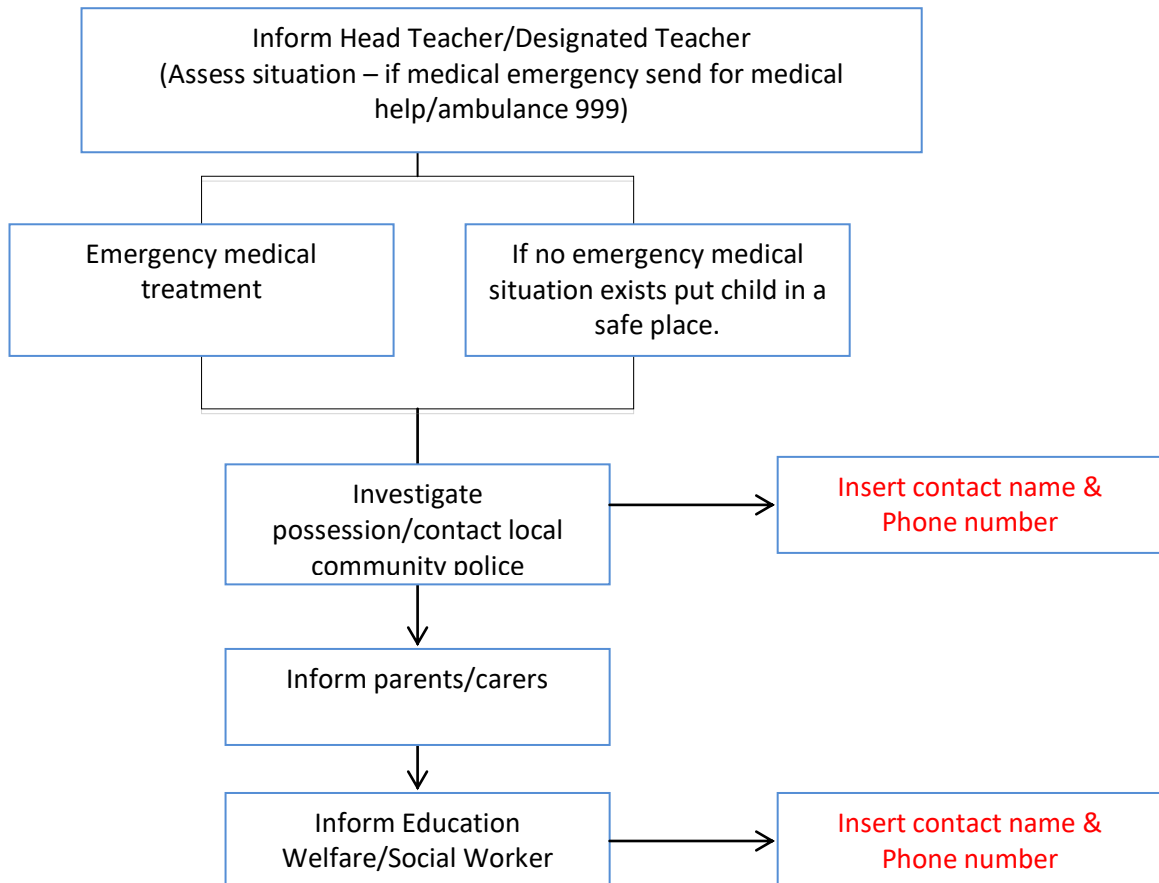
5. Smoking Statement

Smoking is not allowed on the school site.

Parents/Carers/Others under the influence of drugs /alcohol on school premises

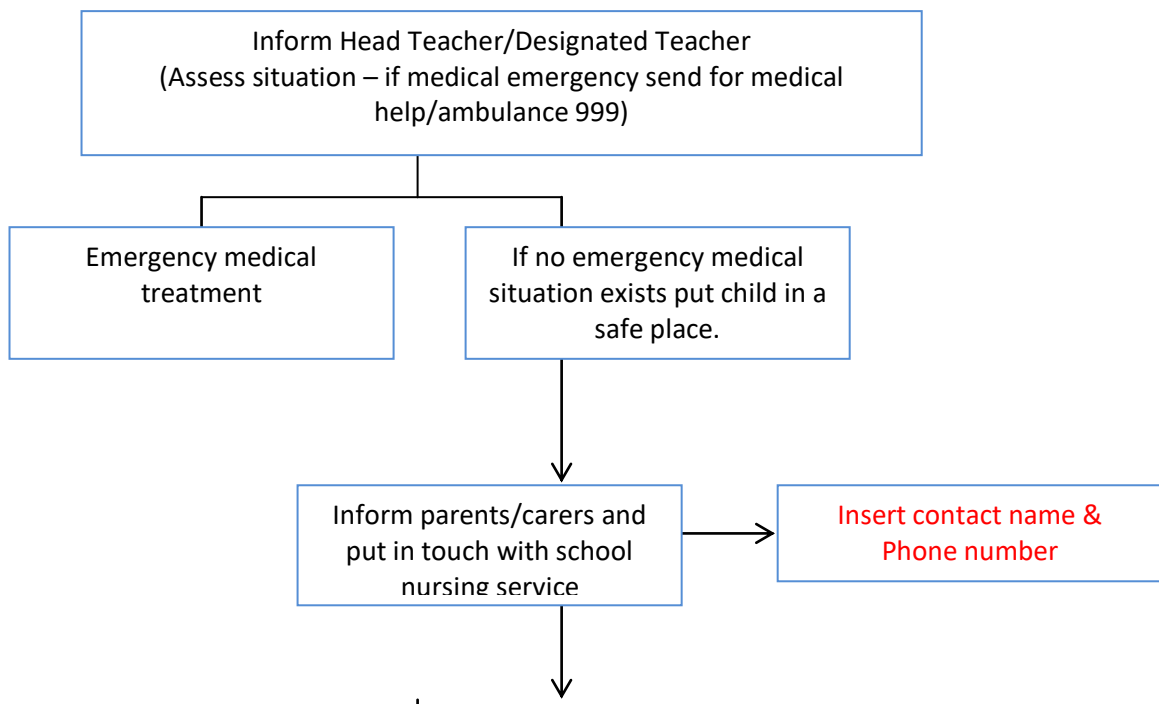


Pupil(s) under the influence of drugs /alcohol on school premises.



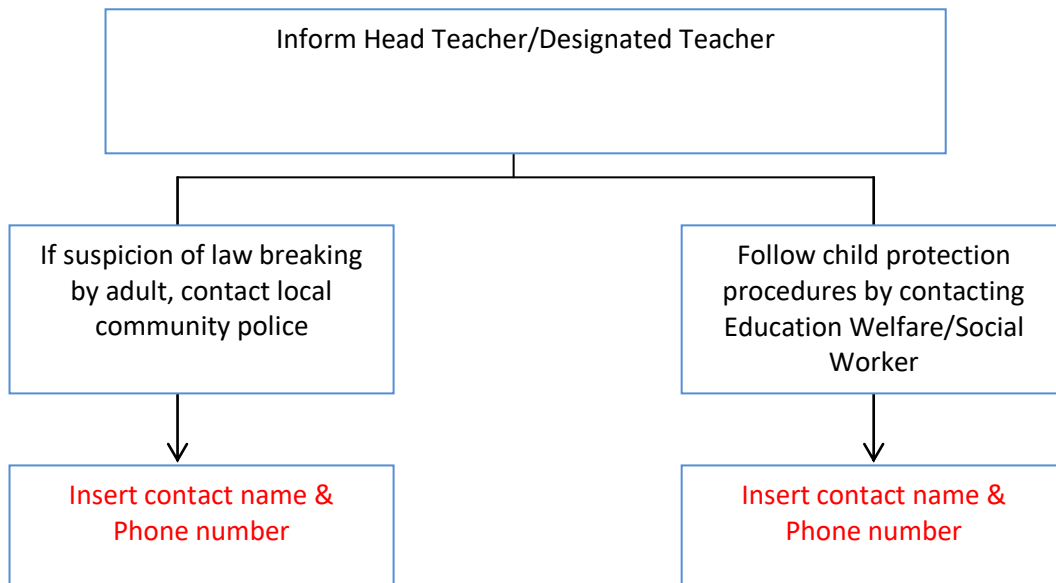
N.B. If tobacco is the drug used you may wish to follow school behavior/discipline policy.

Pupils using medicines inappropriately on school premises.

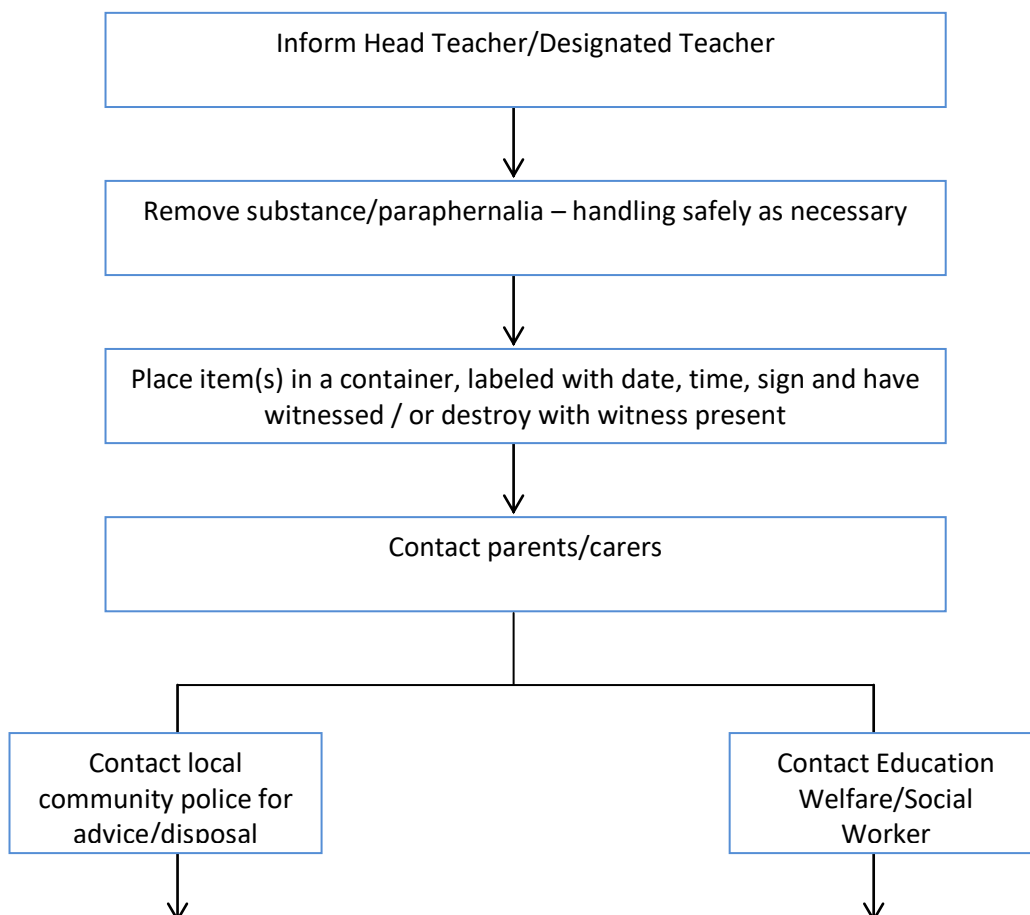


Refer to school policy on use of medicines and follow through.

Pupils makes disclosure about their own or parents/carers/others use of drugs/alcohol



Drugs and / or paraphernalia found on pupils and/or premises



Insert contact name &
Phone number

Insert contact name &
Phone number

Supplying (drugs/alcohol/tobacco) by pupils/parents/carers/others

Inform Head Teacher/Designated Teacher



Establish cause for concern



Contact police 999 to deal with supplier if substance is thought to be illicit and supplier is not a pupil at school

Contact local community police

Offer support/consider referral. Follow child protection procedures and inform Education Welfare/Social Worker



Insert contact name &
Phone number



Insert contact name &
Phone number